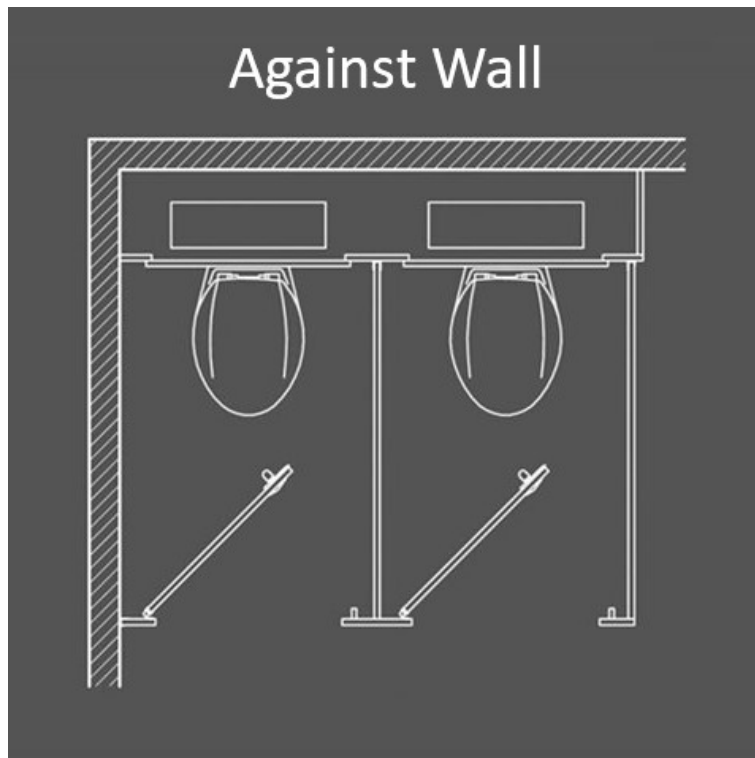


Toilet Cubicles in a Box - Against Walls



Product Code: CUBICLE-AW

These cubicles are intended to fit against one side wall and be finished with a side panel at the opposite end. Installation can be either left or right handed with a maximum length of 1060mm and minimum width of 750mm per cubicle. Available to order online in ranges of up to 8 cubicles between walls.

Constructed from MFC (melamine-faced chipboard), these cubicles are supplied complete with all necessary components, including doors, pilasters, partitions, and essential hardware (please note: screws and wall plugs are not included). They come in four standard laminate colours Blue, Light Grey, Dark Grey, and Warm Oak, with the option to mix and match between doors, pilasters, and partitions to suit your design preferences.

All fittings are provided in a dark grey finish and include faceplates, hinges, pedestal feet, wall channels, and H-sections. Additional fittings are available upon request. The pilasters feature a square edge, finished with a matching 1mm PVC lipping for a clean, durable look.

Cubicles are delivered in standard sizes and clearly labelled for easy on-site installation. Panels and doors can be cut to your specific dimensions, with supplied dark grey continuous channels available to neatly conceal any cut edges. Doors can be configured to open either inward or outward, based on your requirements.

The standard floor clearance is 100mm, and the total cubicle height is 1950mm (including the floor clearance).

Delivery

Fast Delivery - Typically 3 to 5 working days.

Delivery will be arranged to your site on a pallet to reduce the risk of damage.

Tech Spec

Maximum cubicle width = 1 at 1060mm, 2 at 2120mm, 3 at 3180mm, 4 at 4240mm, 5 at 5300mm, 6 at 6360mm, 7 at 7420mm and 8 at 8480mm.

Door - 1850mm x 900mm

Pilaster - 1850mm x 220mm.

Partition halves (2 per panel) - 925mm high x 1800mm Deep.

What's Included

- Doors.
- Pilasters.
- Partitions.
- UPVC door cap and wall channels (dark grey).
- Aluminium head rail (dark grey).
- UPVC H Section (dark grey).
- Polycarbonate indicator bolt.
- Outward keep.

Hinges (dark grey).
Toilet roll holder (dark grey).
Coat Hook (dark grey).
Pedestals (dark grey).
Screws, plugs and channel through fixings.

DocM Building Regulations 2004

All cubicles must be installed in compliance with current building regulations including DocM. For example, the first cubicle in a washroom should be designed to meet ambulant specifications and standard cubicles should allow for a 450mm diameter manoeuvring space between the WC pan and the sweep of the door. It is the responsibility of installers and building owners to ensure that washrooms comply with Document M, where applicable.

Please note that the above is examples and do not constitute a complete list of all regulations.

Disclaimer and Returns

Toilet cubicles are sold exclusively as commercial products to trade customers and are not eligible for returns or cancellations. It is the customer's responsibility to ensure the cubicles purchased comply with the latest building and DocM regulations.

Washware Essentials Ltd will not be held liable for ensuring the selected products meet specific site regulation requirements.

****All pictures shown are for illustration purpose only and may be subject to change without notice. Actual product may vary due to product enhancement.
All dimensions shown are for guidance only and may be subject to change or alteration without notice. All items manufactured or purchased separately from a third party to fit our products should be checked against the actual dimensions of the physical product before purchase. We will not be liable for third party costs and consequential loss associated with the items not fitting third party components.****