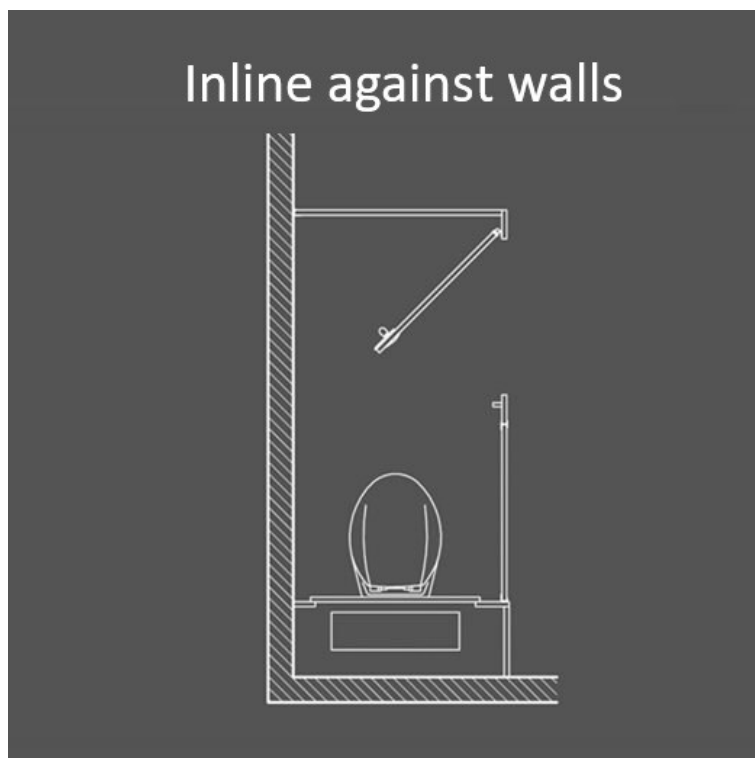
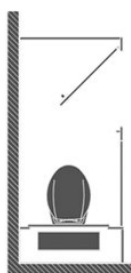


Toilet Cubicles in a Box - Inline Against Walls



Product Code: CUBICLE-IAW

These cubicles are designed to fit against a side and rear wall with an inline door with a maximum length of 2000mm and a minimum width of 750mm per cubicle. They are available to order online as a single cubicle.

These toilet cubicles are crafted from melamine-faced chipboard (MFC) and come supplied with all key components, including doors, partitions, pilasters, and essential hardware—excluding screws and wall plugs. Available in four popular laminate finishes—Blue, Light Grey, Dark Grey, and Warm Oak—you can customise the appearance by combining different colours across the panels, doors, and pilasters.

All hardware is supplied in a dark grey colour and includes components such as hinges, faceplates, pedestal legs, wall channels, and H-joints. Extra fittings can be provided upon request. Each pilaster is manufactured with a square edge and completed with a durable 1mm PVC lipping in a matching colour.

Delivered in a standard size format, the panels and doors are clearly labelled for straightforward on-site assembly. They can be trimmed to fit your specific layout, and supplied continuous channels in dark grey allow for a tidy finish on any visible cut edges. Doors can be installed to open inwards or outwards based on your layout requirements.

Each cubicle features a 100mm floor clearance, with an overall height of 1950mm, including the clearance space.

Delivery

Fast Delivery - Typically 3 to 5 working days.

Delivery will be arranged to your site on a pallet to reduce the risk of damage.

Tech Spec

Maximum cubicle width = 1 at 2000mm (min 750mm width).
Door - 1850mm x 900mm
Pilaster - 1850mm x 220mm.
Partition halves (2 per panel) - 925mm high x 1800mm Deep.

What's Included

Doors.
Pilasters.
Partitions.
UPVC door cap and wall channels (dark grey).
Aluminium head rail (dark grey).
UPVC H Section (dark grey).
Polycarbonate indicator bolt.

Outward keep.
Hinges (dark grey).
Toilet roll holder (dark grey).
Coat Hook (dark grey).
Pedestals (dark grey).
Screws, plugs and channel through fixings.

DocM Building Regulations 2004

All cubicles must be installed in compliance with current building regulations including DocM. For example, the first cubicle in a washroom should be designed to meet ambulant specifications and standard cubicles should allow for a 450mm diameter manoeuvring space between the WC pan and the sweep of the door. It is the responsibility of installers and building owners to ensure that washrooms comply with Document M, where applicable.

Please note that the above is examples and do not constitute a complete list of all regulations.

Disclaimer and Returns

Toilet cubicles are sold exclusively as commercial products to trade customers and are not eligible for returns or cancellations. It is the customer's responsibility to ensure the cubicles purchased comply with the latest building and DocM regulations.

Washware Essentials Ltd will not be held liable for ensuring the selected products meet specific site regulation requirements.

****All pictures shown are for illustration purpose only and may be subject to change without notice. Actual product may vary due to product enhancement.**
All dimensions shown are for guidance only and may be subject to change or alteration without notice. All items manufactured or purchased separately from a third party to fit our products should be checked against the actual dimensions of the physical product before purchase. We will not be liable for third party costs and consequential loss associated with the items not fitting third party components.**