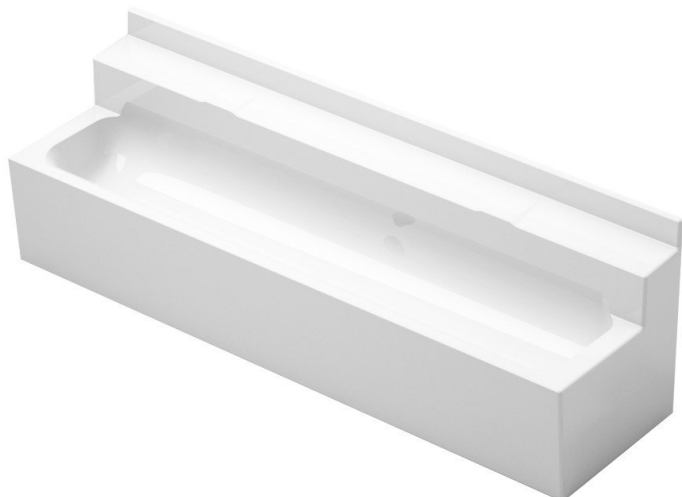


## GRP Wall Mounted Wash Trough 1200mm



Product Code: GRP-WT12

GRP fibreglass trough sinks are supplied with a smooth gloss gel surface white finish. The fibreglass wash trough is supplied in a 1200mm length which is suitable for two users. The smooth gel finish is resistant to acid and alkali concentrations under normal use. The surface resists staining and is easy to clean aided by the smooth round curves of the product. No harsh chemicals are required for cleaning just soap and water.

### Delivery

Typically 2 - 3 working weeks

### Tech specs

Material: GRP (fibreglass)  
Colour: White  
Finish: Smooth gel coat finish  
Standard length: 1200mm (usually for two users)  
Depth (front to back): 395mm  
Trough depth: 450mm with tap deck (140mm deep bowl)  
Tap holes: To be drilled on site by installer (standard hole saw required)  
Waste fitting: Plastic 38mm, dome grated  
Fixings: Integral wall brackets

### Extras

Each fibreglass wash trough can be supplied with these optional extras:

#### Taps

[Time-flow taps](#)  
[Lever-operated mixer taps](#)  
[Infrared basin taps](#)  
[Knee-operated basin taps](#)

#### Traps

[Plastic bottle trap \(38mm\)](#)  
[Brass bottle trap, chrome-plated](#) with chrome flange and waste pipe

#### Miscellaneous

Stainless steel deck or wall mounted [soap dispensers](#)  
[Paper towel dispensers](#) in stainless steel

Front support legs in stainless steel

To ensure a safe hand-washing temperature, we would also recommend installing a [TMV3 thermostatic mixing valve](#).

### **Related products**

If this product not exactly what you're looking for, our school trough sinks come in a variety of sizes, colours and finishes. You may be interested in our [junior trough sinks](#) or [stainless steel trough sinks](#). View our full range of stainless steel [trough sinks here](#).

**\*\*All pictures shown are for illustration purpose only and may be subject to change without notice. Actual product may vary due to product enhancement.  
All dimensions shown are for guidance only and may be subject to change or alteration without notice. All items manufactured or purchased separately from a third party to fit our products should be checked against the actual dimensions of the physical product before purchase. We will not be liable for third party costs and consequential loss associated with the items not fitting third party components.\*\***