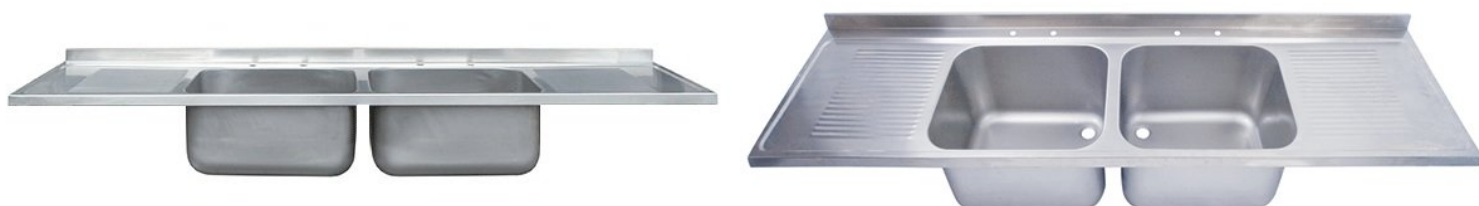


2400mm Double Bowl Double Drainer Catering Sink Tops 650mm Projection



Product Code: VAN-650-DBDDST-24

Double Bowl Double Drainer Catering Sink Tops 650mm Projection

Product Code DBDDST

- DBSDD stainless steel double bowl double drainer catering sink tops.
- Length 2400mm.
- 650mm projection.
- The catering sink top is supplied as sink top only to be mounted on a base unit (not supplied).
- Two 600 x 400 x 300mm deep sink bowls on the 2400mm unit.
- Supplied with one pair of 28mm tap holes at 180mm centres to each sink bowl.
- Complete with 38mm waste fitting with standpipe strainer/overflow to each sink bowl.
- **Please note this unit is not supplied with a waste as standard.**

Size

- Length: 2400mm.
- Projection: 650mm.
- Upstand: 50mm.
- Two sink bowls: 600mm x 400mm x 300mm.

Delivery

- In Stock 2-3 working days.

Options

- [For taps and pre rinse spray units see our tap section.](#)

****All pictures shown are for illustration purpose only and may be subject to change without notice. Actual product may vary due to product enhancement. All dimensions shown are for guidance only and may be subject to change or alteration without notice. All items manufactured or purchased separately from a third party to fit our products should be checked against the actual dimensions of the physical product before purchase. We will not be liable for third party costs and consequential loss associated with the items not fitting third party components.****