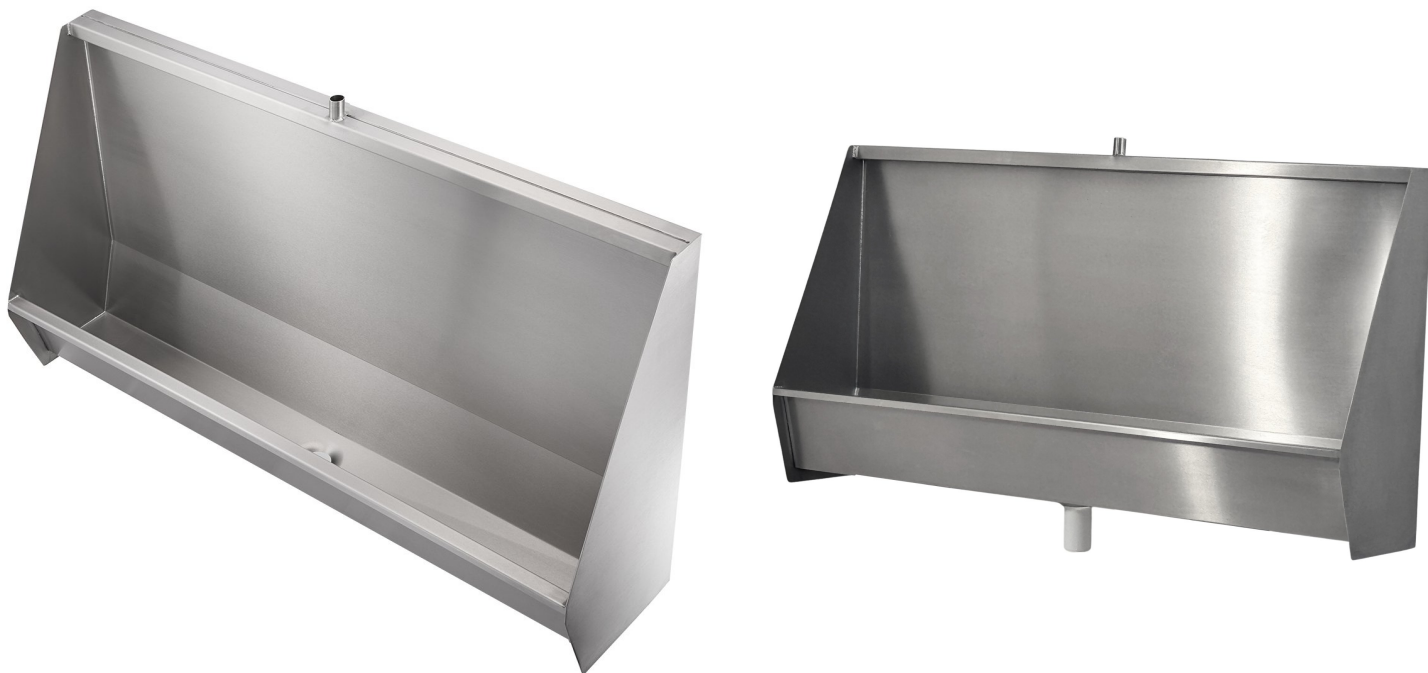


## Classic Stainless Steel Wall Hung Urinals 900mm To 2400mm Long



Product Code: WPUC

Our stainless steel large standard wall-mounted trough urinal is the ideal solution for high-traffic school washrooms and commercial environments. Built from durable grade 304 stainless steel with a brushed satin finish, this hygienic and vandal-resistant urinal offers a long-lasting, low-maintenance alternative to traditional ceramic bowls.

With a taller height of 615mm and a 251mm projection, this larger standard urinal is perfect for replacing older or oversized models in primary schools, secondary schools, colleges, and public facilities. It's designed to withstand heavy daily use while maintaining a clean, modern look.

Each unit is supplied pre-drilled for easy wall fixing, and includes a white plastic auto-flushing cistern and stainless steel downpipe – delivering excellent value for money. The wall-hung design allows for installation at a pupil-appropriate height, making these urinals suitable for a wide age range.

### Delivery

Standard lengths: 900mm, 1200mm, 1500mm, 1800mm, 2000mm, and 2400mm with centre outlet, and top entry flush pipe connections

Typically 1 to 2 working days

Non standard lengths, back entry flushpipe connection urinals

Typically 15 to 20 working days

### Tech specs

Material: 1.2mm-thick stainless steel with satin finish body, 2mm thick ends

Six standard lengths: 900mm, 1200mm, 1500mm, 1800mm, 2000mm and 2400mm

Depth (front to back): 251mm

Height (top to bottom): 615mm

Waste fitting: 38mm plastic dome grated in centre

Cistern: white plastic auto cistern

Downpipe: 725mm long, 22mm diameter

Each stainless steel trough urinal comes with a top entry downpipe connection as standard; alternatively, they can be supplied with a rear entry connection for use with a concealed cistern and downpipe for a small supplementary charge.

**Extras**

Your stainless steel trough urinal can also be supplied with any of the following accessories:

*Traps*

[Plastic bottle trap \(38mm\)](#)

[Brass bottle trap, chrome-plated with chrome flange and waste pipe \(38mm\)](#)

*Covers*

Stainless steel trap covers

*Flush controller*

[Marnic Water Watch](#)

**Related products**

Why not complete your school washroom with one of our [stainless steel toilets](#)? or alternatively visit our [school toilets page](#) to see the white china range.

**\*\*All pictures shown are for illustration purpose only and may be subject to change without notice. Actual product may vary due to product enhancement.  
All dimensions shown are for guidance only and may be subject to change or alteration without notice. All items manufactured or purchased separately from a third party to fit our products should be checked against the actual dimensions of the physical product before purchase. We will not be liable for third party costs and consequential loss associated with the items not fitting third party components.\*\***